

JPC Staff Climate and Culture Survey 2021- District Results

The survey was conducted from March 15 to April 11, 2021.

All staff were invited to complete a survey for the location where they work.

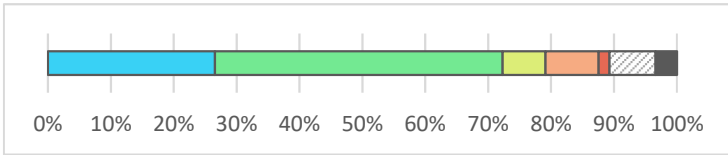
Of the 504 survey invitations sent to JPC staff, 180 surveys were returned.

180/504 provides an official response rate of 36%

School	Survey Responses	Surveys Sent	Resp. Rate
JPC	131	279	47%
Maintenance	19	65	29%
Transportation	19	128	15%
Other	11	32	34%
Total	180	504	36%

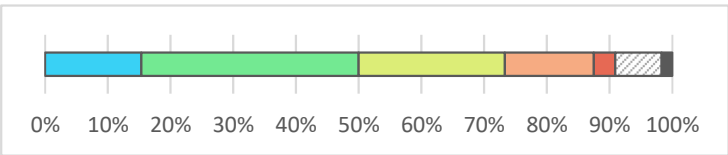
JPC Staff Climate and Culture Survey 2021- District Results

District staff believes that all students can be successful in school



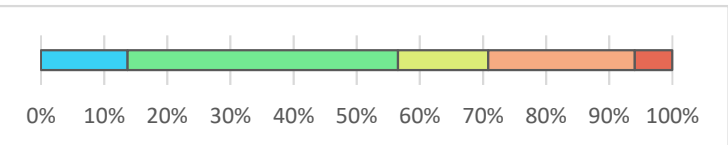
Strongly Agree	27%	47
Agree	46%	81
Neither Agree nor Disagree	7%	12
Disagree	8%	15
Strongly Disagree	2%	3
Don't Know	7%	13
Not Applicable	3%	6
Total		177

Members of the district community value differences between people and groups



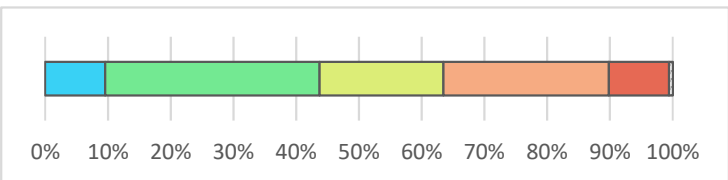
Strongly Agree	15%	27
Agree	35%	61
Neither Agree nor Disagree	23%	41
Disagree	14%	25
Strongly Disagree	3%	6
Don't Know	7%	13
Not Applicable	2%	3
Total		176

The district treats me and my colleagues with respect



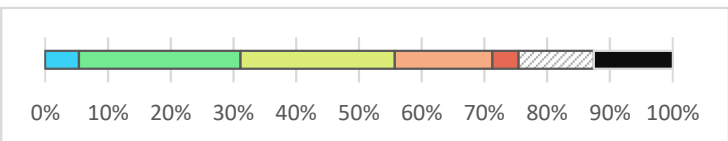
Strongly Agree	14%	23
Agree	43%	72
Neither Agree nor Disagree	14%	24
Disagree	23%	39
Strongly Disagree	6%	10
Total		168

The district communicates practices and updates on a consistent basis



Strongly Agree	10%	16
Agree	34%	57
Neither Agree nor Disagree	20%	33
Disagree	26%	44
Strongly Disagree	10%	16
Don't Know	1%	1
Total		167

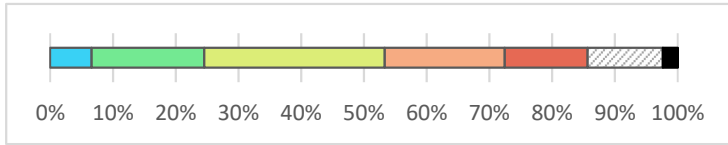
The district provides opportunities for educator input on practices



Strongly Agree	5%	9
Agree	26%	43
Neither Agree nor Disagree	25%	41
Disagree	16%	26
Strongly Disagree	4%	7
Don't Know	12%	20
Not Applicable	13%	21
Total		167

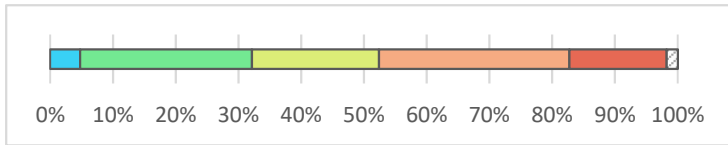
JPC Staff Climate and Culture Survey 2021- District Results

People have an advantage at VPS due to the color of their skin



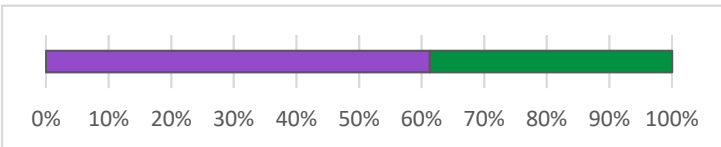
Strongly Agree	7%	11
Agree	18%	30
Neither Agree nor Disagree	29%	48
Disagree	19%	32
Strongly Disagree	13%	22
Don't Know	12%	20
Not Applicable	2%	4
Total		167

District leaders communicate a clear and consistent vision



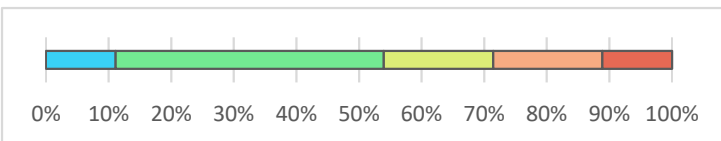
Strongly Agree	5%	8
Agree	27%	46
Neither Agree nor Disagree	20%	34
Disagree	30%	51
Strongly Disagree	15%	26
Don't Know	2%	3
Total		168

Have you had an issue or concern to discuss with an administrator this year



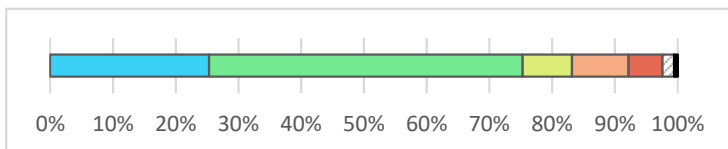
No	61%	103
Yes	39%	65
Total		168

The administrative team responded to my concerns whether or not he or she agreed with my views



Strongly Agree	11%	7
Agree	43%	27
Neither Agree nor Disagree	17%	11
Disagree	17%	11
Strongly Disagree	11%	7
Total		63

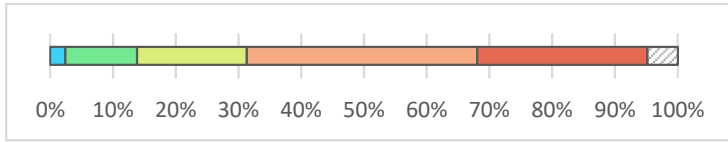
I am able to talk with a member of the leadership team when I need to



Strongly Agree	25%	42
Agree	50%	83
Neither Agree nor Disagree	8%	13
Disagree	9%	15
Strongly Disagree	5%	9
Don't Know	2%	3
Not Applicable	1%	1
Total		166

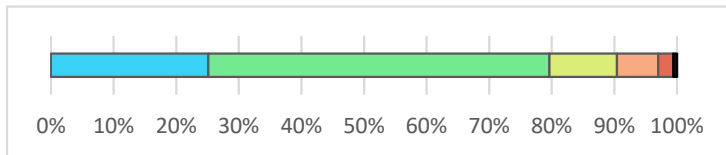
JPC Staff Climate and Culture Survey 2021- District Results

All staff are included in important decisions at the district



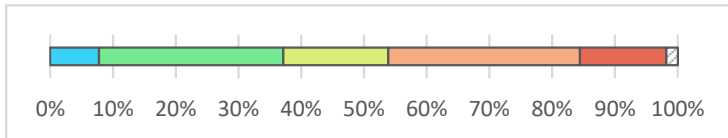
Strongly Agree	2%	4
Agree	11%	19
Neither Agree nor Disagree	17%	29
Disagree	37%	61
Strongly Disagree	27%	45
Don't Know	5%	8
Total		166

My work area is clean and well-maintained



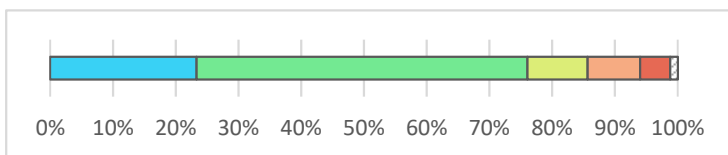
Strongly Agree	25%	42
Agree	54%	91
Neither Agree nor Disagree	11%	18
Disagree	7%	11
Strongly Disagree	2%	4
Not Applicable	1%	1
Total		167

Comfortable temperatures are maintained throughout the building where I work



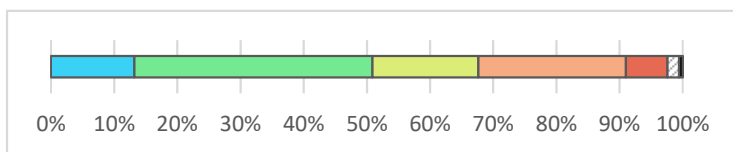
Strongly Agree	8%	13
Agree	29%	49
Neither Agree nor Disagree	17%	28
Disagree	31%	51
Strongly Disagree	14%	23
Not Applicable	2%	3
Total		167

The district does its best to keep the workplace safe



Strongly Agree	23%	39
Agree	53%	88
Neither Agree nor Disagree	10%	16
Disagree	8%	14
Strongly Disagree	5%	8
Don't Know	1%	2
Total		167

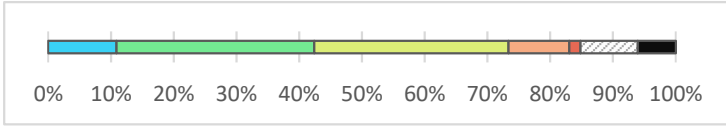
There is adequate training in emergency procedures



Strongly Agree	13%	22
Agree	38%	63
Neither Agree nor Disagree	17%	28
Disagree	23%	39
Strongly Disagree	7%	11
Don't Know	2%	3
Not Applicable	1%	1
Total		167

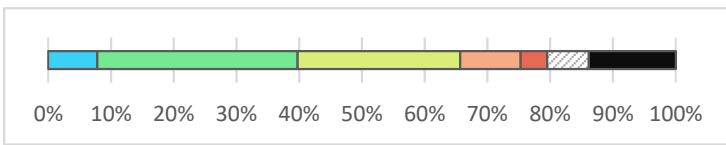
JPC Staff Climate and Culture Survey 2021- District Results

The district respects different aspects of my identity



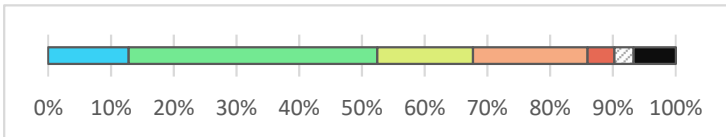
Strongly Agree	11%	18
Agree	32%	52
Neither Agree nor Disagree	31%	51
Disagree	10%	16
Strongly Disagree	2%	3
Don't Know	9%	15
Not Applicable	6%	10
Total		165

The district provides professional learning opportunities and encourages us to reflect on the different cultures identities and experiences in the classroom



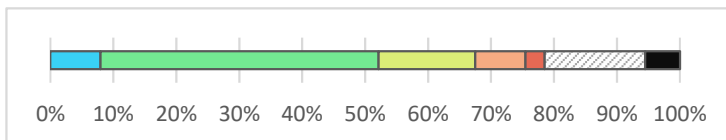
Strongly Agree	8%	13
Agree	32%	53
Neither Agree nor Disagree	26%	43
Disagree	10%	16
Strongly Disagree	4%	7
Don't Know	7%	11
Not Applicable	14%	23
Total		166

I feel equipped to recognize signs of trauma and mental illness



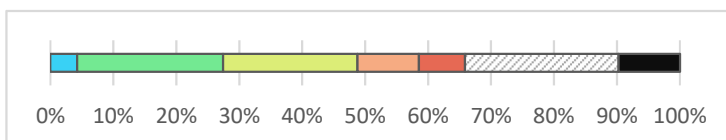
Strongly Agree	13%	21
Agree	40%	65
Neither Agree nor Disagree	15%	25
Disagree	18%	30
Strongly Disagree	4%	7
Don't Know	3%	5
Not Applicable	7%	11
Total		164

The district has the resources to connect students and families to the appropriate services they need for mental health



Strongly Agree	8%	13
Agree	44%	72
Neither Agree nor Disagree	15%	25
Disagree	8%	13
Strongly Disagree	3%	5
Don't Know	16%	26
Not Applicable	6%	9
Total		163

When students misbehave there are opportunities for them to repair the harm they may have caused the school community



Strongly Agree	4%	7
Agree	23%	38
Neither Agree nor Disagree	21%	35
Disagree	10%	16
Strongly Disagree	7%	12
Don't Know	24%	40
Not Applicable	10%	16

JPC Staff Climate and Culture Survey 2021- District Results

Total

164